
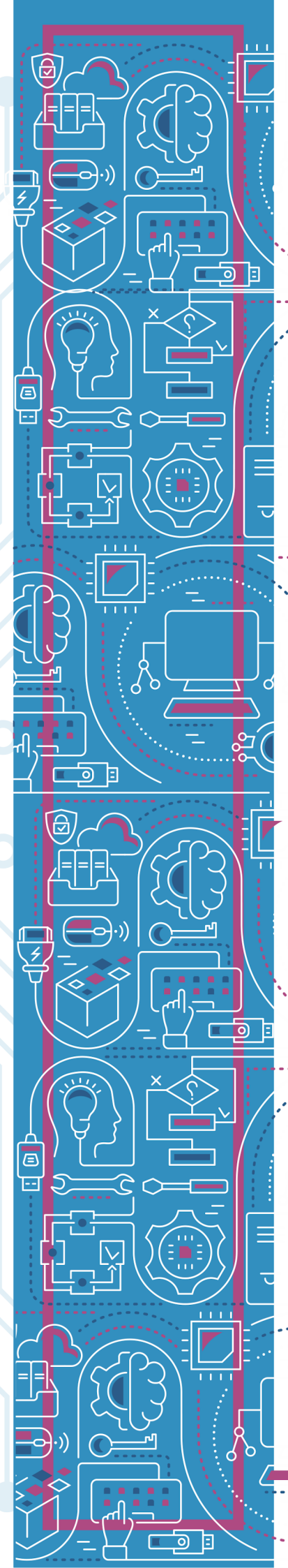


< Tasks >

Name	load/unload a coffee machine 
Description	<p>Introduction of Draw O Bot: The teacher gives the students the task of drawing the process of using a dishwasher.</p> <p>The learners work in teams of two. Each team member has a role: there is a programmer and a robot. The programmer gives the commands, while the robot carries out the commands.</p>
Tasks	<p>Task 1a: Coding the Robot</p> <p>Together with your team member, you should think of codes for the process of using a dishwasher so that the robot can visualize them. One of you is the programmer, the other one is the robot. Draw the first version with a pencil on Post-Its.</p> <p>Task 1b: Saving your results</p> <p>Take a photo of your result!</p>



Tasks

Task 2: Create loops

Is there a way to shorten your code? Can you add loops? Try your code and run your commands again. You are welcome to swap the roles of "programmer" and "robot".

Task 2b: Saving your results

Draw the codes as accurately as possible on a Post-It with a black pen and take a picture of the final result.

Task 3: Answer the following questions of the given questionnaire:

1. What in your own words is CT?
2. Did you like/dislike the Draw O Robot Task - why/why not? Justify your answer!
3. Did you have any issue with the webpage or program whilst doing your task?
4. What aspects of CT are included in this assignment?

